

LAUNDRY TIME

STEP 1: SORT

Separate the clothes into:

Whites ~ Light Colours ~ Dark Colours



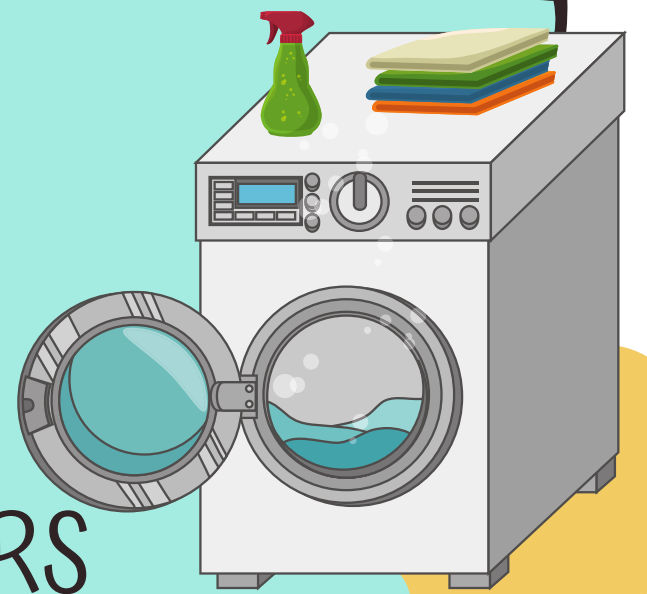
STEP 2: WASH

Load machine, Add soap & softener

WHITES
(hot water)

LIGHT COLOURS
(warm water)

DARK COLOURS
(cold water)

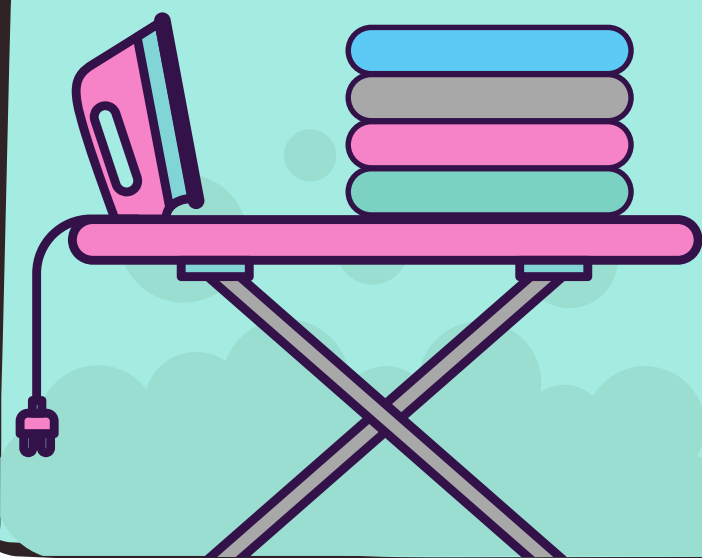


STEP 3: HANG / DRY



BRILLIANT

STEP 4: FOLD / IRON



Sort & fold garments according to type,
(eg. shirts, pants) & owner